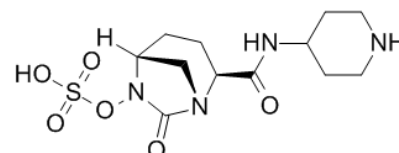


Product Name : Relebactam
Cat. No. : PC-45070
CAS No. : 1174018-99-5
Molecular Formula : C₁₂H₂₀N₄O₆S
Molecular Weight : 348.3754
Target : Bacterial
Solubility : 10 mM in DMSO



Biological Activity

A novel β -lactamase inhibitor that inhibited both class A and C β -lactamases in vitro; effectively restored imipenem's activity against imipenem-resistant *Pseudomonas* and *Klebsiella* strains at clinically achievable concentrations; reduces imipenem MICs for Enterobacteriaceae with KPC carbapenemases from 16-64 mg/L to 0.12-1 mg/L at a concentration of 4 mg/L.

Bacterial Infection
Phase 3 Clinical

References

- Hirsch EB, et al. *Antimicrob Agents Chemother.* 2012 Jul;56(7):3753-7.
Blizzard TA, et al. *Bioorg Med Chem Lett.* 2014 Feb 1;24(3):780-5.
Livermore DM, et al. *J Antimicrob Chemother.* 2013 Oct;68(10):2286-90.

Caution: Product has not been fully validated for medical applications. Lab Use Only!

E-mail: tech@probechem.com